

# FLYING ONLINE LASER MARKING MACHINE

✓ WORK WITH PRODUCTION LINE

✓ CABLES & PIPES MARKING

✓ HIGH PRECISION

CLEAR AND UNERASABLE MARKING  
LOW COST FOR MAINTENANCE



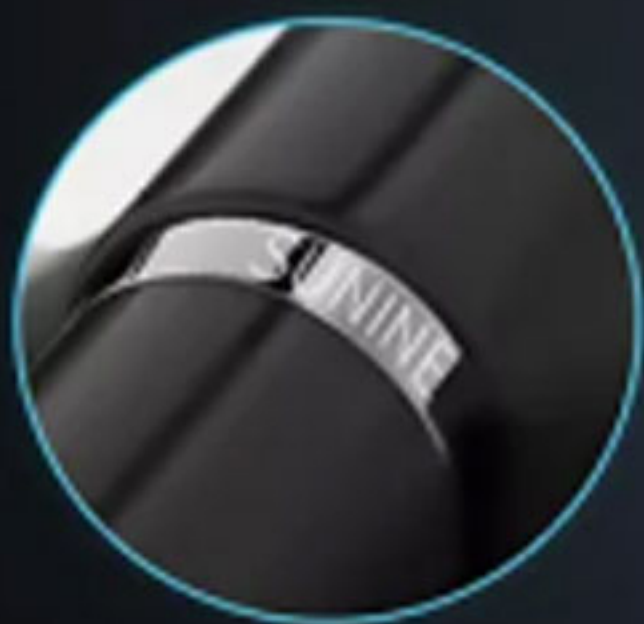




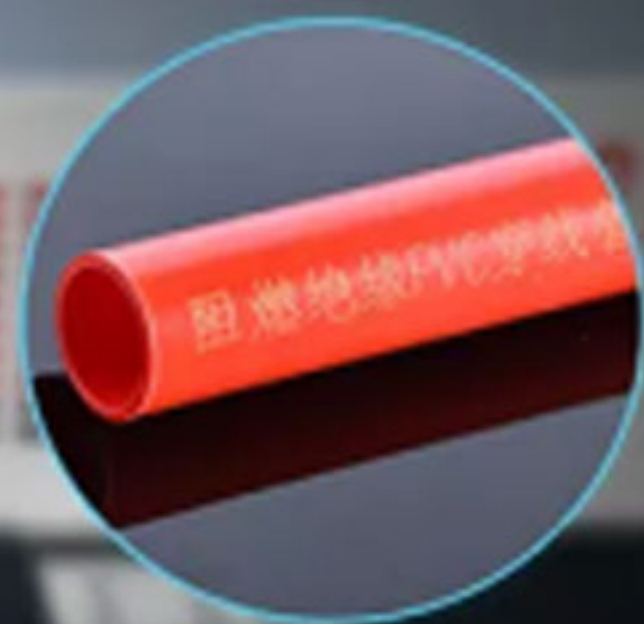
**Beverage**



**Pharmaceutical**



**Jewelry**



**Pipe**

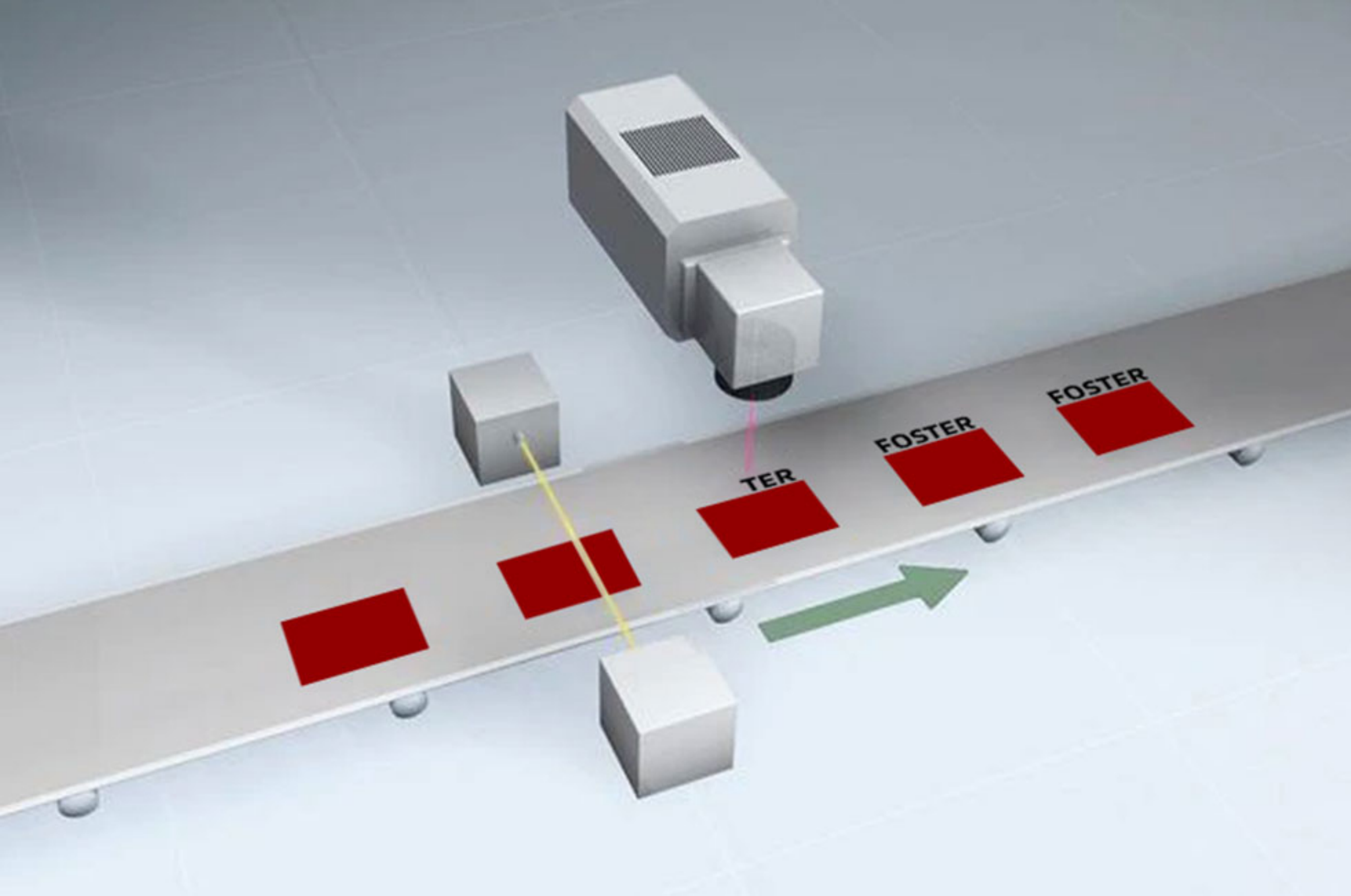


**Wood**



**Chemical for Daily use**



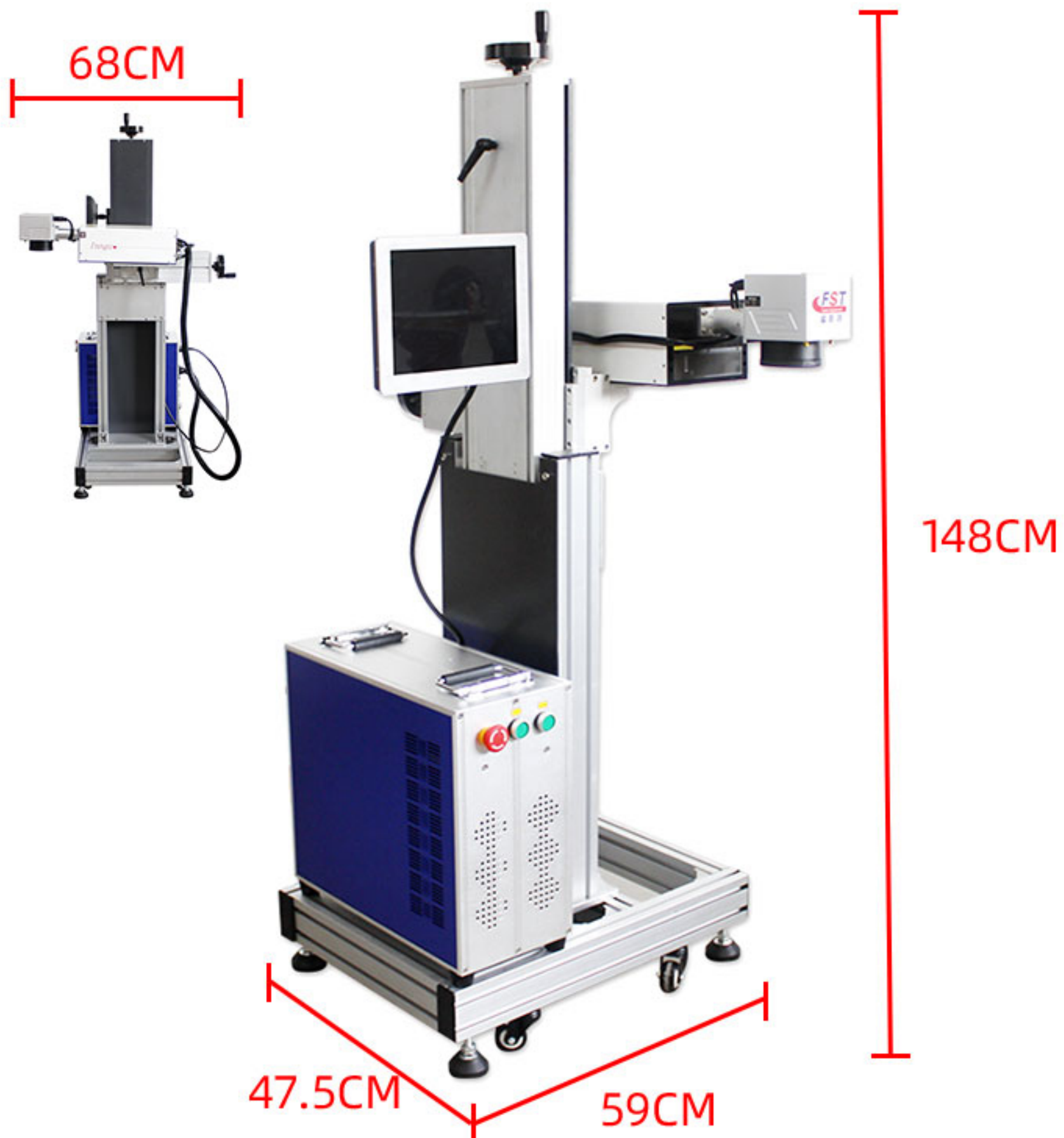




# PRODUCT INTRODUCTION

## FLYING LASER PRINTING MARKING MACHINE

High speed online flying laser marking machine for coding date on bottle, laser printer is suitable for cables, PE pipes, the it is especially suitable for automatic production line of date code or bar code. According to customer's different needs matching fiber, CO2, UV, RF and other models and automatic assembly line work bench to meet customer requirements of flight standards system, to achieve assembly line operations to improve production efficiency.



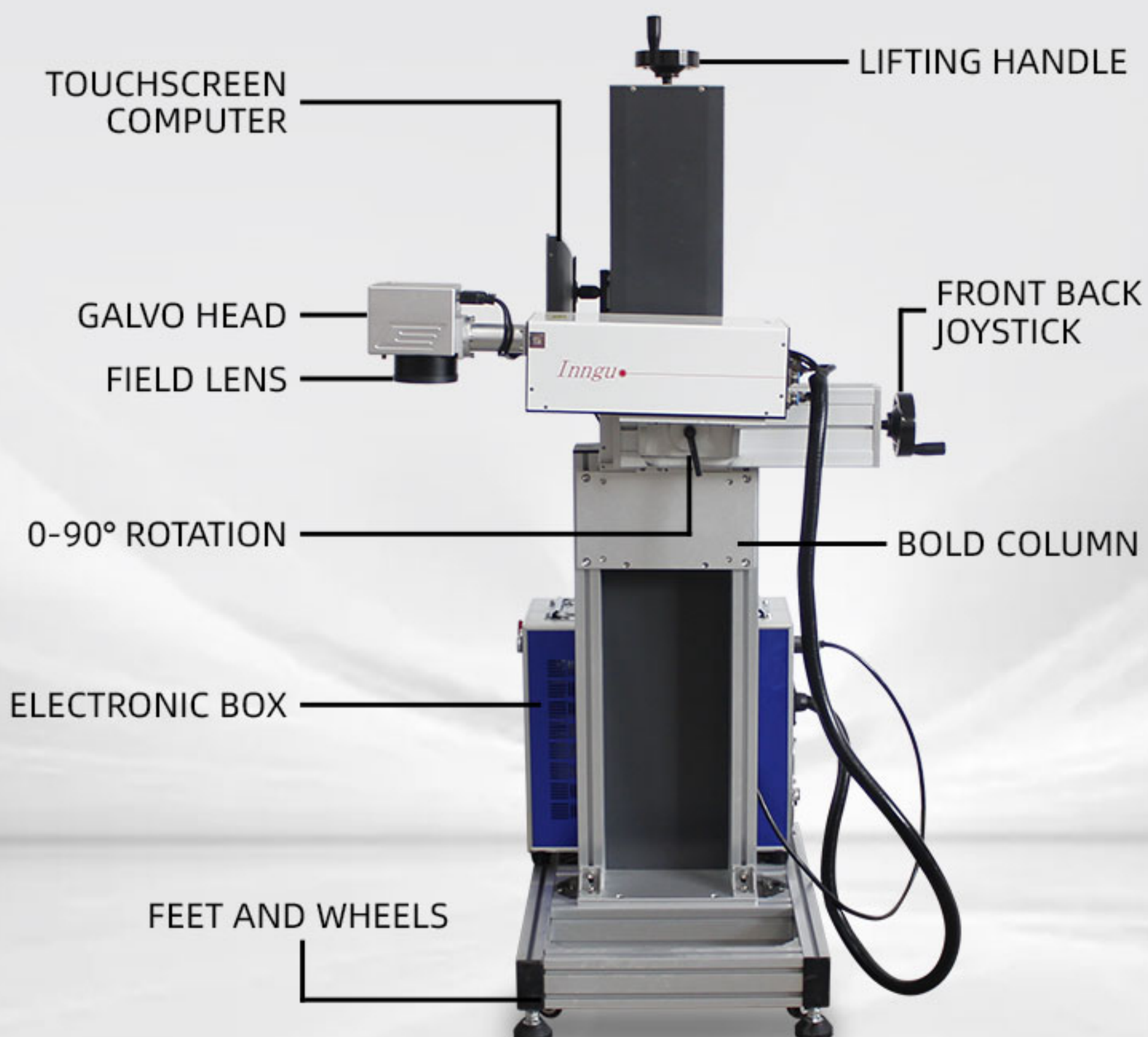
This dimension is for reference only, and the actual dimension is subject to the machine



# PRODUCT ADVANTAGES

## FLYING LASER PRINTING MARKING MACHINE

- ✓ The flying laser marking machine is suitable for working for mass marking of the production line. It is suitable for marking serial numbers, date, logo on pen, metal, Craft gifts, advertising signs, model making, food packaging, electronic components, pharmaceutical packaging, medicine packaging, printing plate, shell plate etc.
- ✓ Machine adopts special split style structure, laser head with the function of automatic sensor, will mark automatically when the work piece go through the laser head.
- ✓ Marking software, particularly designed & written for laser marking, has multi-function and friendly interface, is easy to operate, which can achieve different marking parameters setting and application, support 2D coding, serial number, logo, date, numbers marking.
- ✓ The conveyor belt is optional, it is also can be customized. This flying laser can be work with your own production line too.





# FLY LASER MARKING MACHINE



# INKJET MACHINE

COMPARISION	FLY LASER MARKING MACHINE	INKJET MACHINE
PRINT COLOR	Black PE marking white, White PVC mark black, and may more colors depends on products	Can inkjet one color only
LASER SOURCE	You can choose UV, Fiber, RF laser source	No
CONSUMABLE PARTS	No	Filter need to replaced regularly
CONSUMABLES COSTS	No	Expensive (Ink and solvents)
MAINTENANCE	Minimal(Clean lens regularly)	Heavy(Ink line must be clean frequently)
ENVIRONMENTAL	No	Ink and solvents emit a taste that's not good for workers.
PRINTING EFFECT	Beautiful, permanent, never fade, even in the water	Non-permanent, easy to erase

Summary: Laser marking machine has lower usage cost, forever marking, and environmental friendly.

Compared with ink jet printer, laser marking machine has functions of no consumption, no pollution, no noise, energy saving and environmental protection.

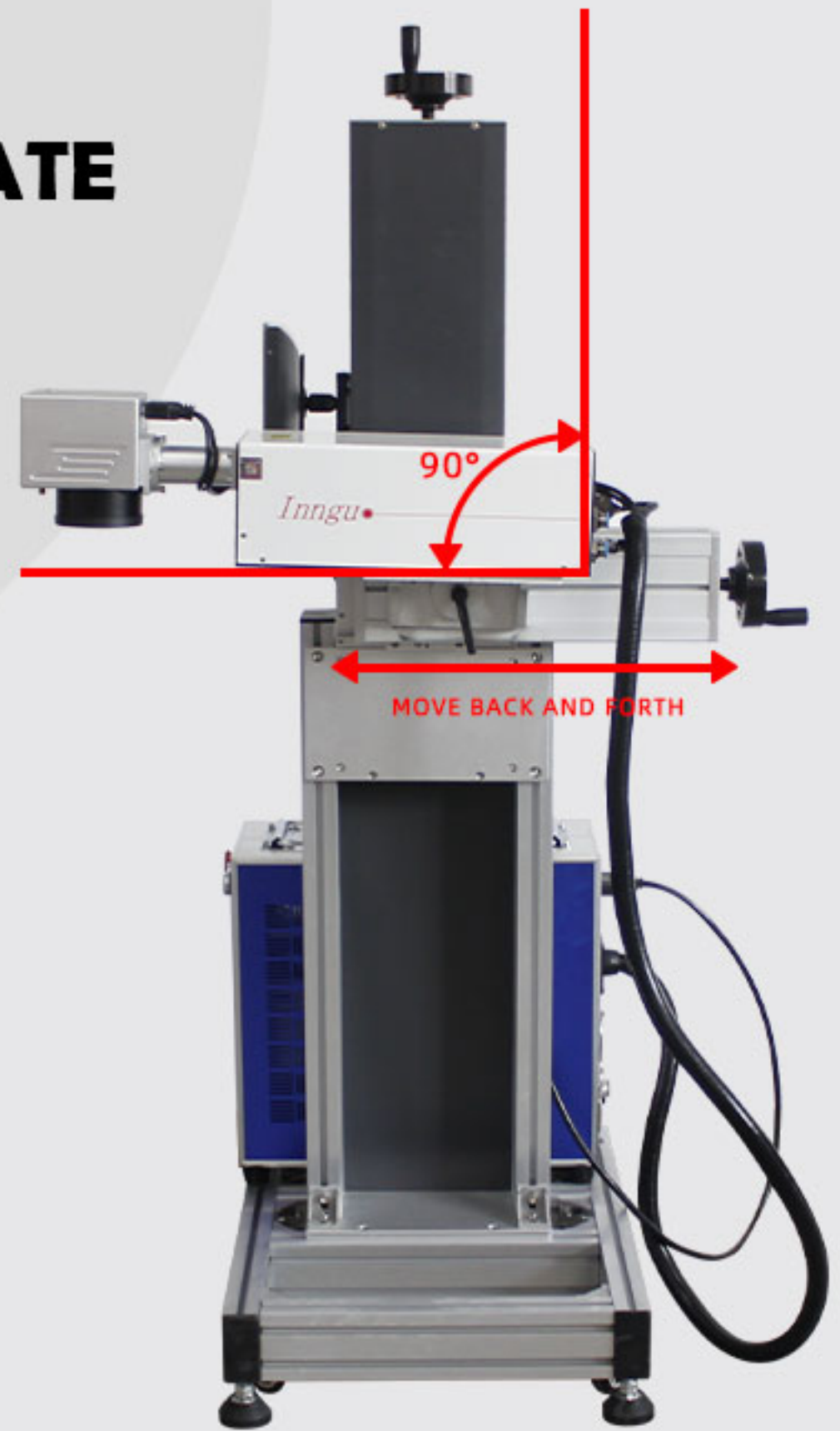


# DETAIL DISPLAY

FLYING LASER PRINTING MARKING MACHINE

## LASER HEAD CAN ROTATE 0-90 DEGREES

MEET DIFFERENT PLACES MARKING  
DEMANDS, SUCH AS SIDE FACE.



FOSTER

## TOUCH SCREEN OPERATION SYSTEM

SUPPORT MARKING : TEXT, DATE, CODE, QR CODE, SERIES NUMBER POWER-OFF  
PROTECTION FUNCTION: WHEN POWER-ON, ALL DATA WILL BE PROTECTED  
AND CONTINUE MARKING

Support input language:  
Arabic, Russian, Spanish, Thai, Portuguese, German, English...



FOSTER



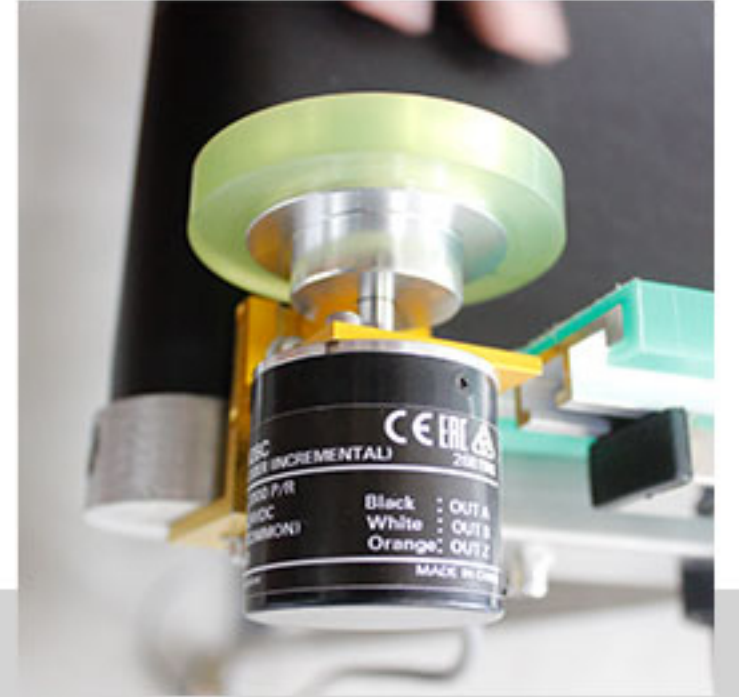
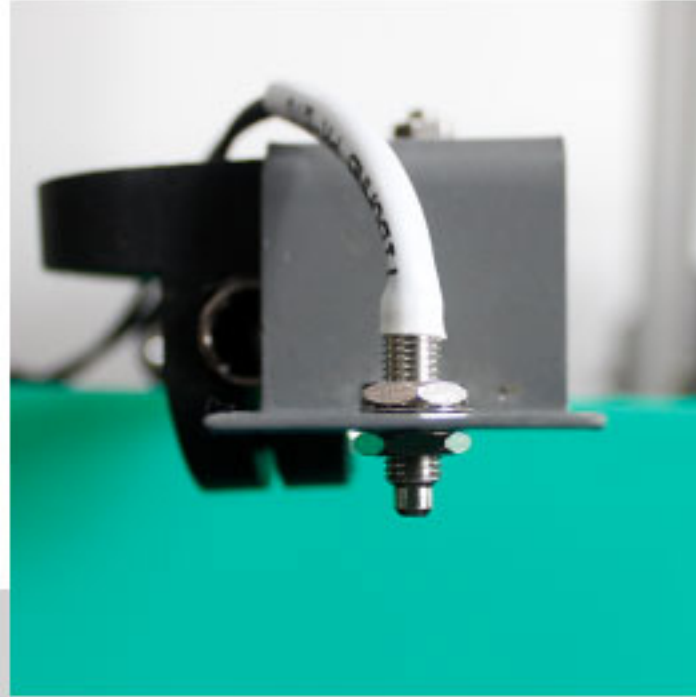
# ENGRAVE / MARK PRODUCTS WHILE IT IS MOVING

Two common use methods to achieve flying marking:

**Photoelectric sensor:** widely for bottles , bags or other independent products .

**Encoder:** widely for pipes and wires marking Machine can mark when products do not move.)

FOSTER



## CONVEYOR BELT

LASER MARKING ON THE FLY FOR CONTINUOUS PRODUCTION LINES, MARKING "ON THE FLY" OFFERS GREAT SOLUTION FLEXIBILITY BY ENABLING. MARKING/ENGRAVING OF THE PRODUCT WHILE IT IS MOVING.

(OPTIONAL)



FOSTER



## THE WHOLE MACHINE CAN MOVE

Flying fiber laser marking machine footprint is easy to move, can be easily integrated into all kinds existing production lines.



FOSTER

## LASER SOURCE AND GALVANOMETER

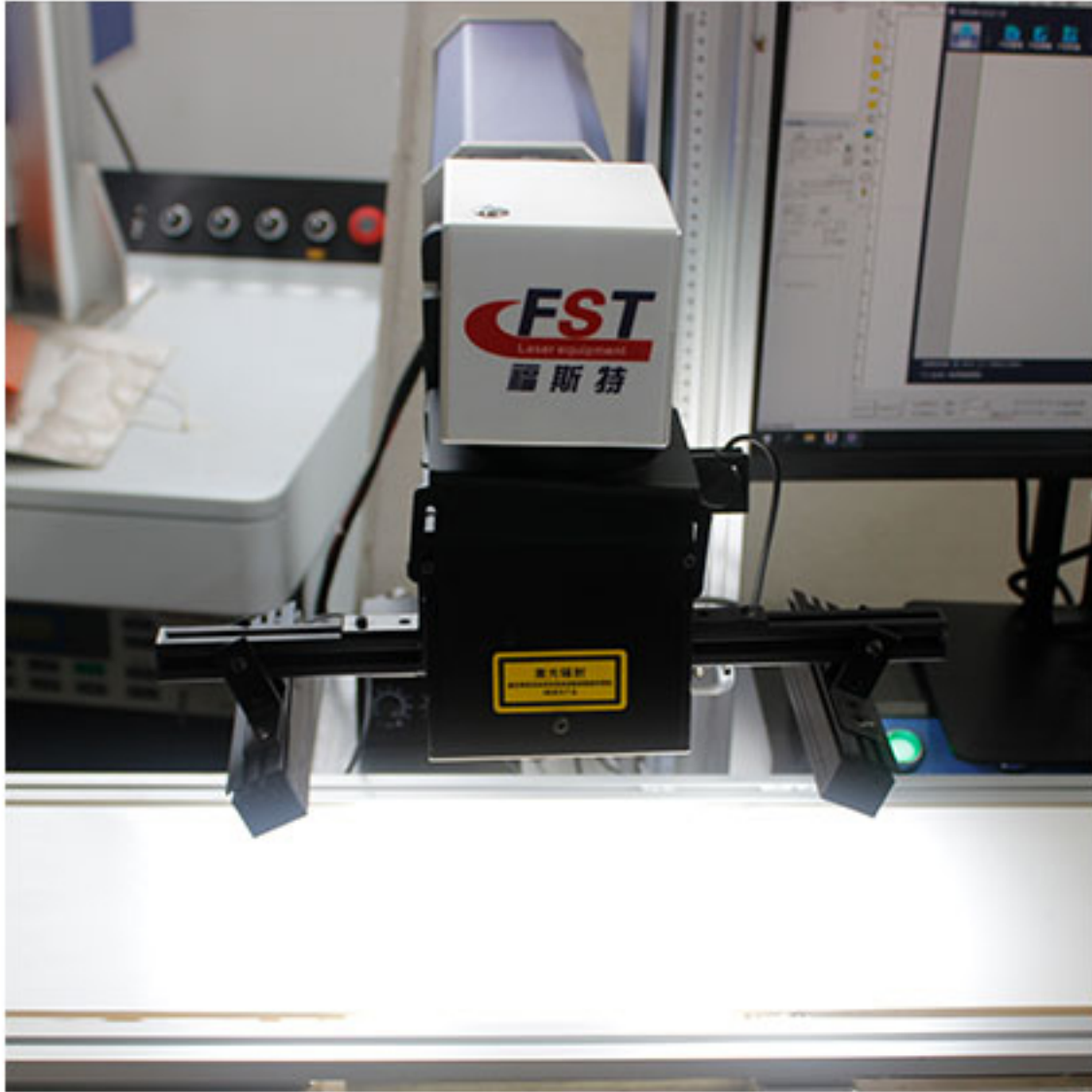
HIGH ADAPTABILITY: MACHINE ADOPTS GOOD QUALITY LASER SOURCE AND FAST SPEED GALVO HEAD, WHICH MAINTAINING EXCELLENT MARKING QUALITY. CAN BE USED ON MANY MATERIALS LIKE METAL, PLASTIC, ALLOY ETC. CAN BE USED IN MANY INDUSTRIES LIKE JEWELRY ENGRAVING, MEDICAL DEVICES, PHONE CASE ENGRAVING, HARDWARE INDUSTRY, STAINLESS STEEL TABLEWARE, ELECTRON COMPONENTS MARKING ETC.



FOSTER



## OPTIONAL CCD (FLYING)

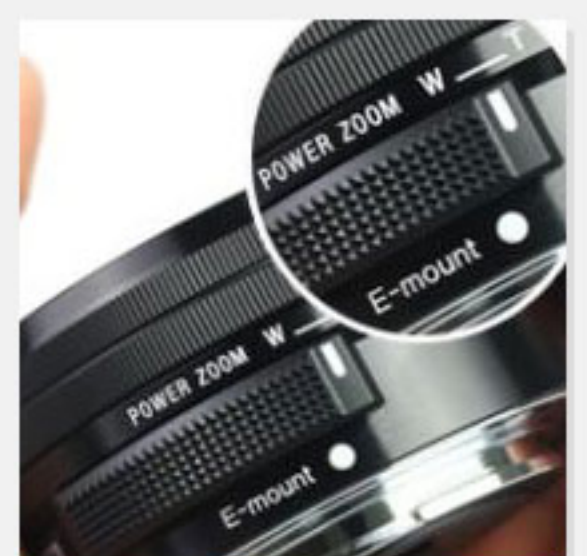




# APPLICATIONS INDUSTRY

## FLYING LASER PRINTING MARKING MACHINE

- ▶ High speed online flying laser marking machine for coding date on cap bottle laser printer combines laser technologies with production line, it can mark on fast moving items for conveyor / pipe / cable and conduct 24 hours continuous working.
- ▶ It is mainly used to mark characters, figures, batch numbers, production dates, validity, LOGO, real time clock information and anti-counterfeiting, especially the pharmaceutical industries GMP and food industries HACCP.





# DELIVER GOODS

FLYING LASER PRINTING MARKING MACHINE



Machine cleaning and Protective oil processing



Wrapping with protective film



Wooden box sealing



Container Sealing and Transportation



container loading



Forklift moving goods

# OPERATION TUTORIAL

---

FLYING LASER PRINTING MARKING MACHINE

## FLY LASER MARKING MACHINE

OPERATION TUTORIAL



SEND AN INQUIRY TO GET A TUTORIAL.



