

FOSTER LASER

FST-4060

LASER ENGRAVING CUTTING MACHINE

BUILD GLOBAL HIGH COST PERFORMANCE



F E A T U R E S

F O S T E R

- 1) Adjustable Speed and Power , Smooth and Precise Engraving and Cutting
- 2) USB interface, support USB dropped breakpoints continued
- 3) Air Assist , Remove heat and combustible gases from the cutting surface
- 4) Embedded Exhaust Fan , Easier install , Safer transport
- 5) Rotary Axis , Engrave any cylindrical object (Optional parts)
- 6) Aluminum Knife Worktable or Honeycomb Worktable .
- 7) Intuitive Control Panel , Set Speed , power and more controls directly from the laser
- 8) Water Cooling and Protection System
- 9) Red light positioning
- 10) Emergency Stop Button
- 11) Larger Size , 400' 600mm working area
- 12) The lifting platform is electric control
- 13) Drag-and-chain transmission line .
- 14) Laser focal length : 5CM



> front <



> behind <

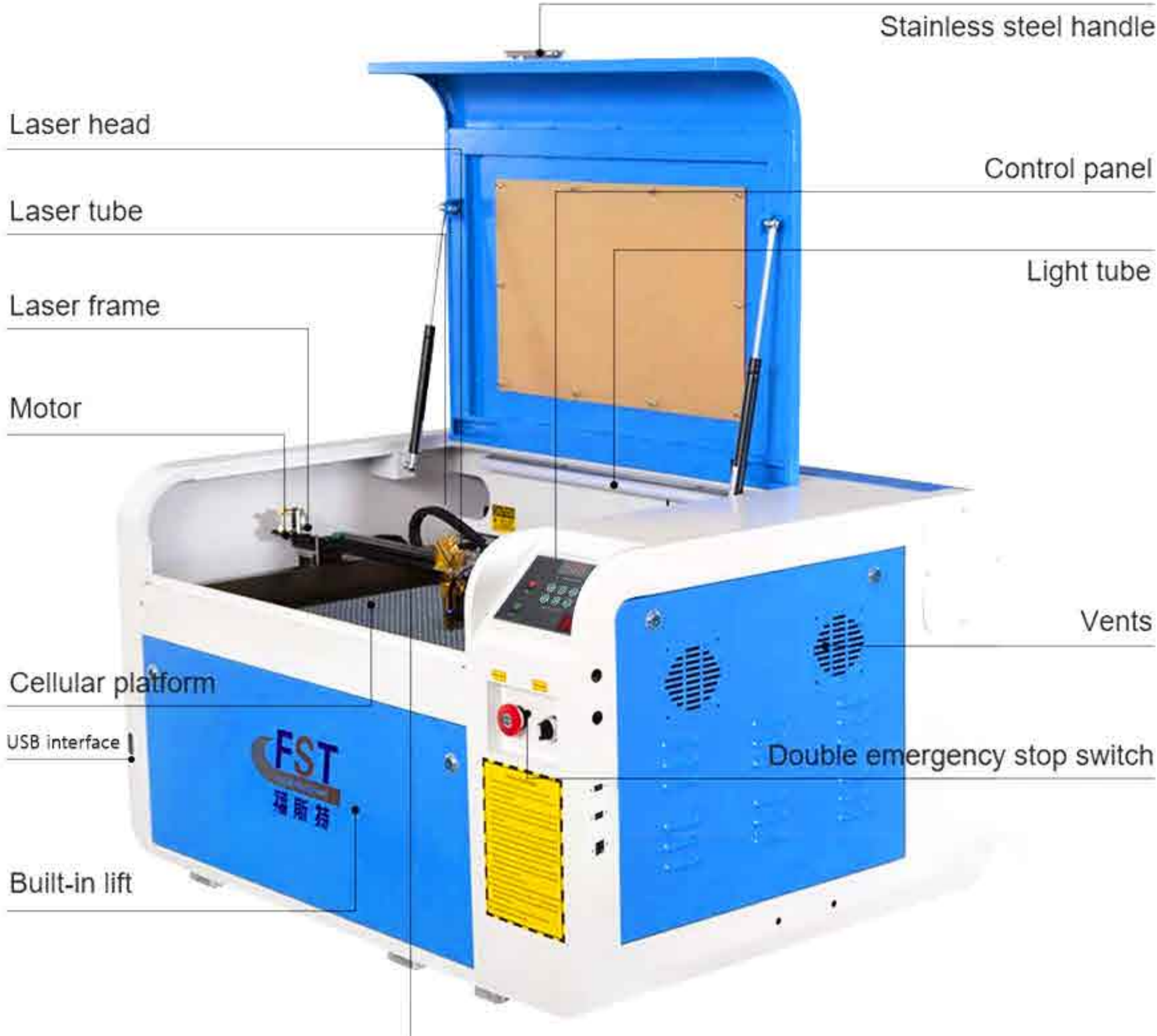


> side <

PARAMETERS

FOSTER

Model	FST 4060 laser engraving cutting machine
Working area	600*400mm
Laser type	sealed co2 glass laser tube
Laser power	40W/50W/60W/80W/100W
Engraving speed	0-30000mm/min
Cutting speed	0-3600mm/min
Cutting thickness	0-20mm (depends on materials)
Resolution rate	±0.05mm
Data transfer interface	USB2.0
Working voltage	220v±10% 50hz 110v±10%60hz
Min shaping character	Character:2*2mm letter:1*1mm
Software	CorelDraw/ CorelLaser/ LaserDRW
Supported graphic formats	BMP PCX TGA TIF PLT CDR
Working temperature	0-45°C
Working humidity	5%-90%
Resolution ratio	<4500DPI
Optional parts	Rotary axis,water chiller 3000/5000/5200.
Machine size	≥60W 1400*740*580mm
Machine size	40W/50W 1030x740x580mm
Package	Packing in export wooden cases



Guide



DESKTOP STYLE



WITH LEGS FOR EASY TO OPERATE (OPTIONAL)

APPLICATION

FOSTER

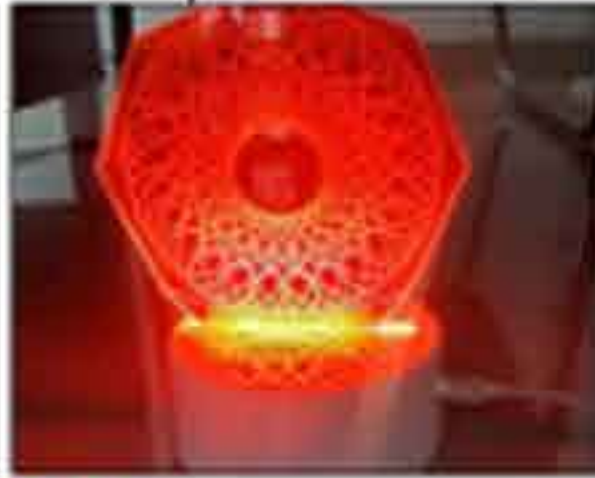
Application Materials:

Acrylic, Plexiglas, double color board, ABS board, PVC board, bamboo, MDF, wood, paper, leather, fabric, wool, rubber, resin etc

Application Industry

Advertisement, Garments sampling, Small width tailoring, leather industry, shoemaking, decoration, furniture, packing and printing, model industry, craftwork and gift, etc.

ACRYLIC



GLASS



CERAMICS



FELT



IRREGULAR SHAPE



FOAM



STONE



LEATHER



PAPER



PLASTIC



SILICONE



TWO COLOR PLATES

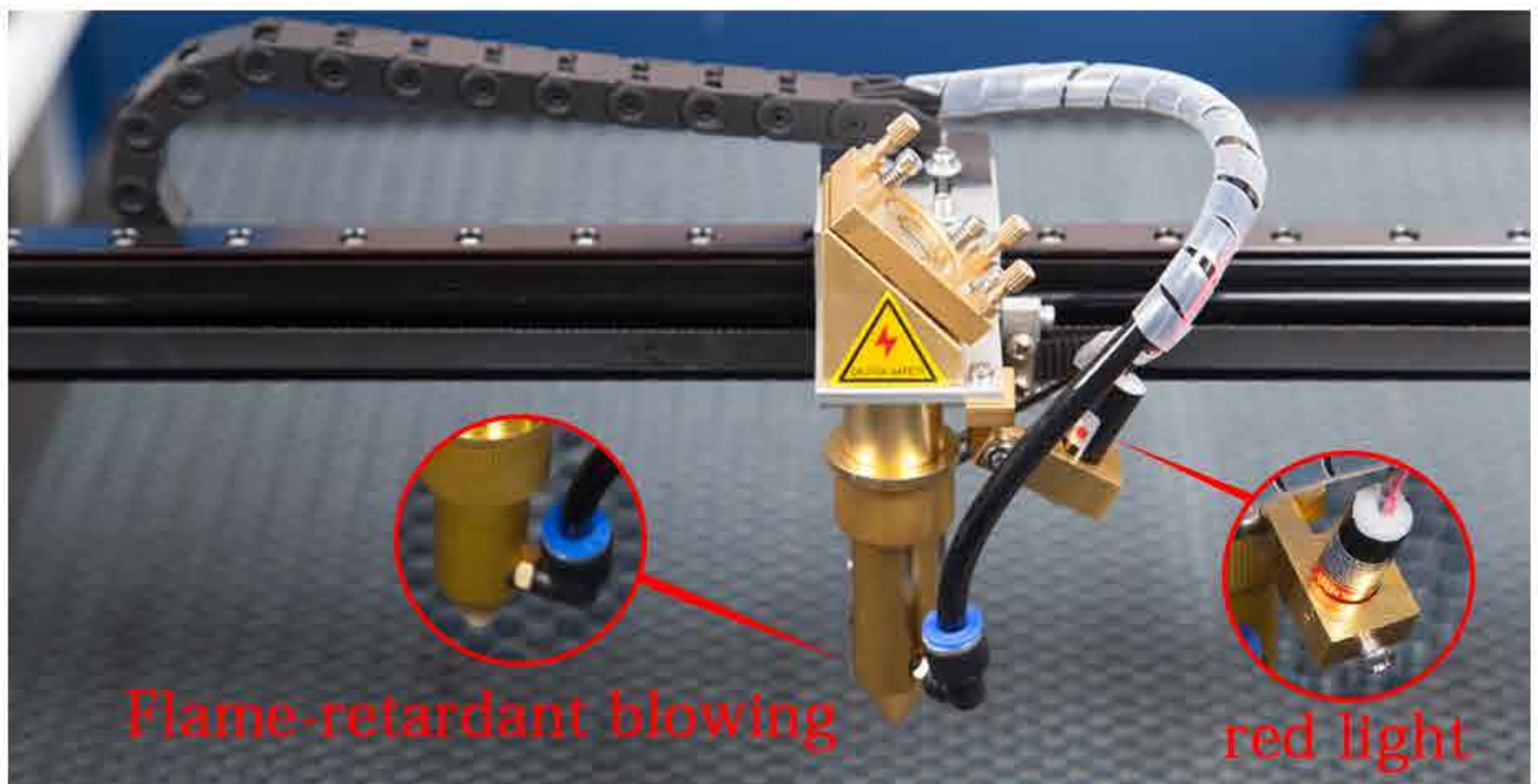
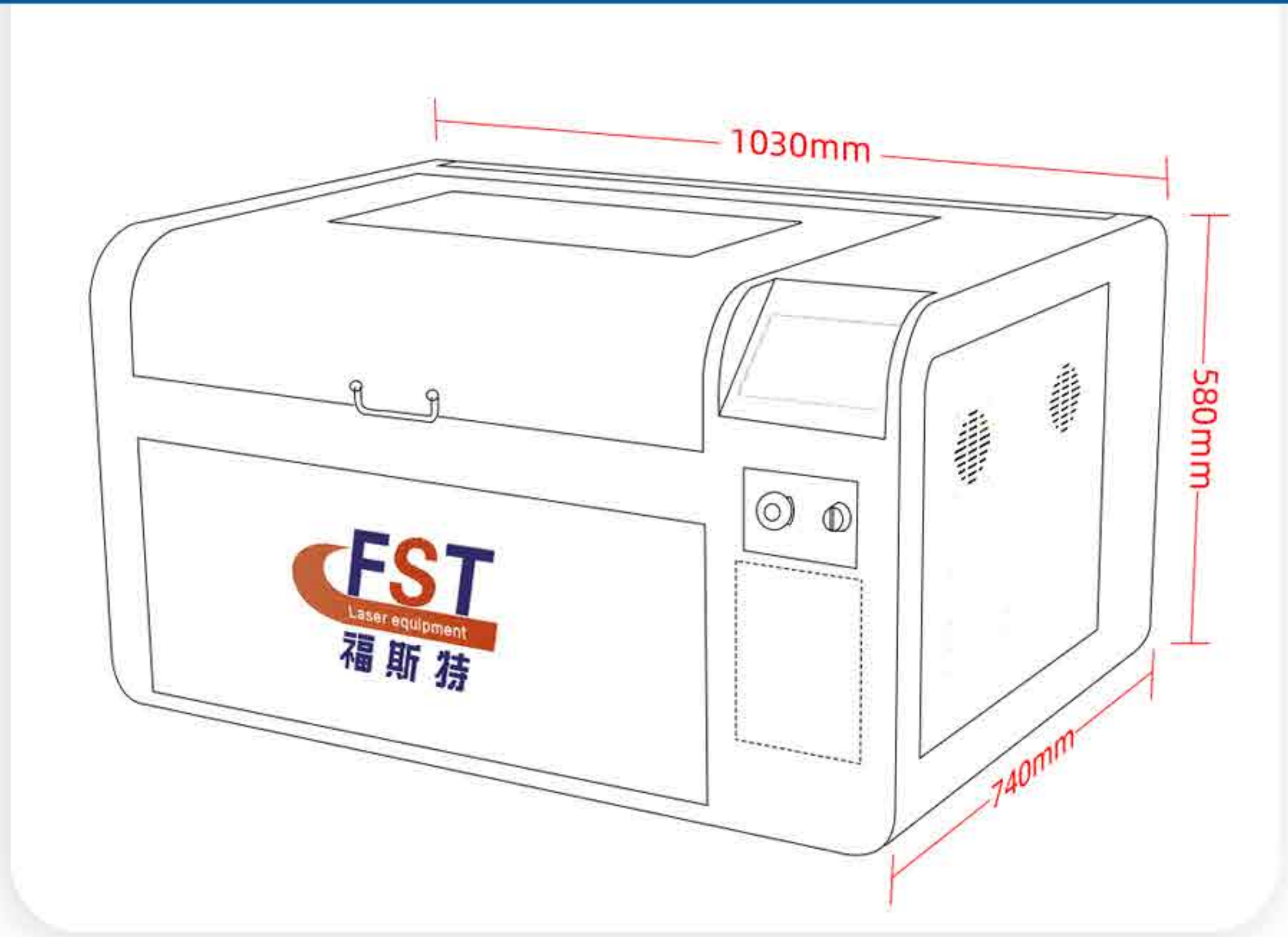


WOOD



WOODCUT





// Laser head

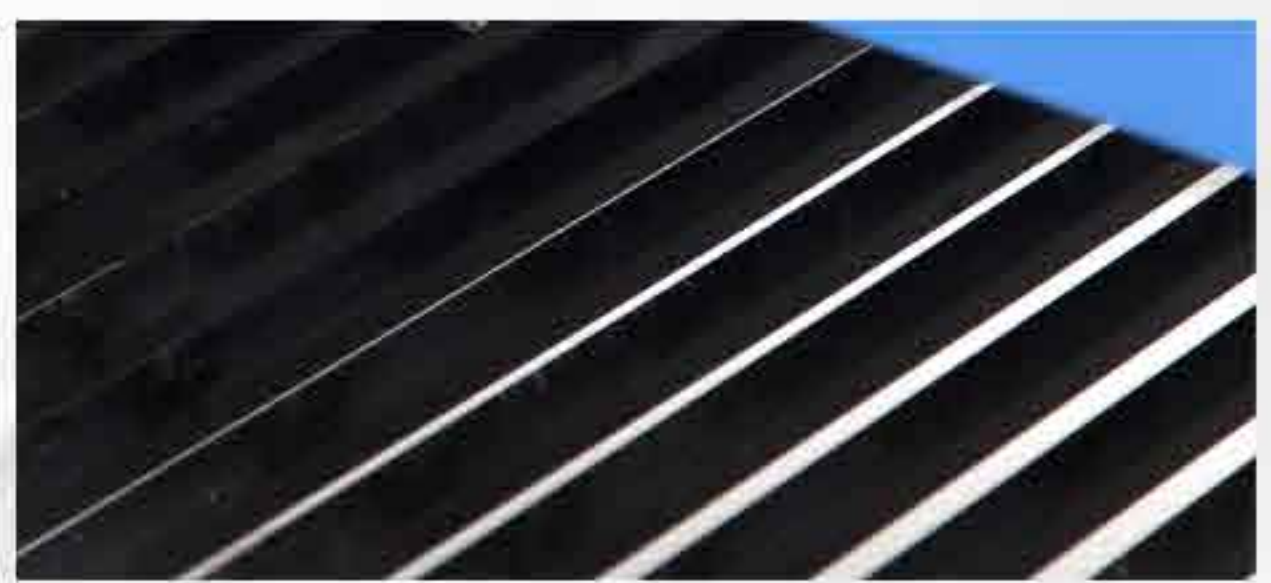
The air pipe has been installed on it. So that dust will not contact the lens. The blown air can cool the lens and cool the material surface. Red light positioning function(Optional).

// Cooling and blowing

Cool and blow air to prevent cuts from burning. Air Assist Remove heat and combustible gases from the cutting surface.

// Aluminum knife worktable (Optional)

To process hard materials like acrylic, wood and so on.



// Honeycomb worktable

- 1) Small holes make sure good supporting performance which is suitable for leather, cloth and other thin soft materials.
- 2) The hole of honeycomb worktable is small, so the small workpiece can be placed on the table surface to be processed.

// Electric Up down worktable

The height of the platform can be adjusted, freely to facilitate products of any thickness.





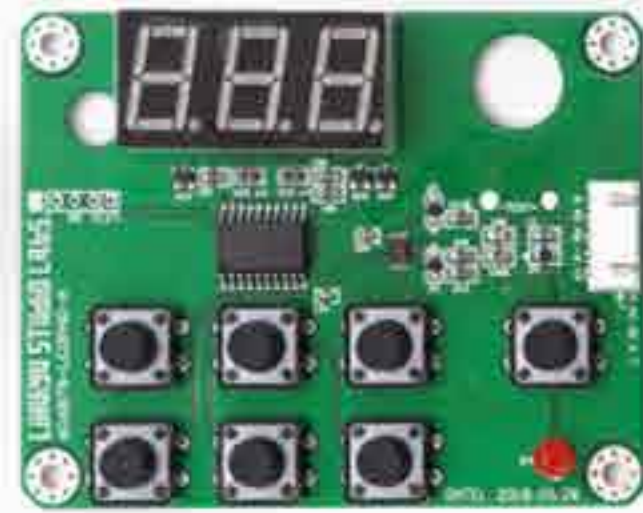
// Features

M2 mainboard is a square port USB interface mainboard.

1. Support carving, cutting image engraving, slow marking;
2. Support for receiving unlimited number of engraving data;
3. Support USB dropped breakpoints continued;
4. Support unlimited engraving format;
5. Support USB dropped detection;
6. Supports accidental breakpoints;



M2 Nano Mainboard



M2 Panel



USB dongle



CorelDRAW

// Supported software

Corellaser is a CorelDRAW plug-in
Support CorelDRAW 11, 12, X3, x4,
X5, X6, 2019...



// Laser tube

Closed Co2 laser tube, long life, stable power. Installation of reinforcement settings, the laser tube is not easy to collide and cause damage when moving the machine. (EFR, RECI, CDWJ, YONGLI, JOY. Optional)

// X Axis can upgrade to linear guide

Special linear guide rail good stability and long service life low noise and high precision.





// Stepper motor

Strong power, reliable performance, safe and fast, ensure the normal operation of the machine.

// Built-in exhaust fan

Built-in Exhaust Fan, Easier install, Safer transport



// Reflector

45° mirror adjustment set. Three-point dimming bolt for easier dimming.

// USA II-VI Lens

Imported USA II-VI Lens, suitable for various environments, and has high precision and high speed.



// Famous brand Belt

The ONK brand belt, wear resistance, good stability, compact structure and low noise.

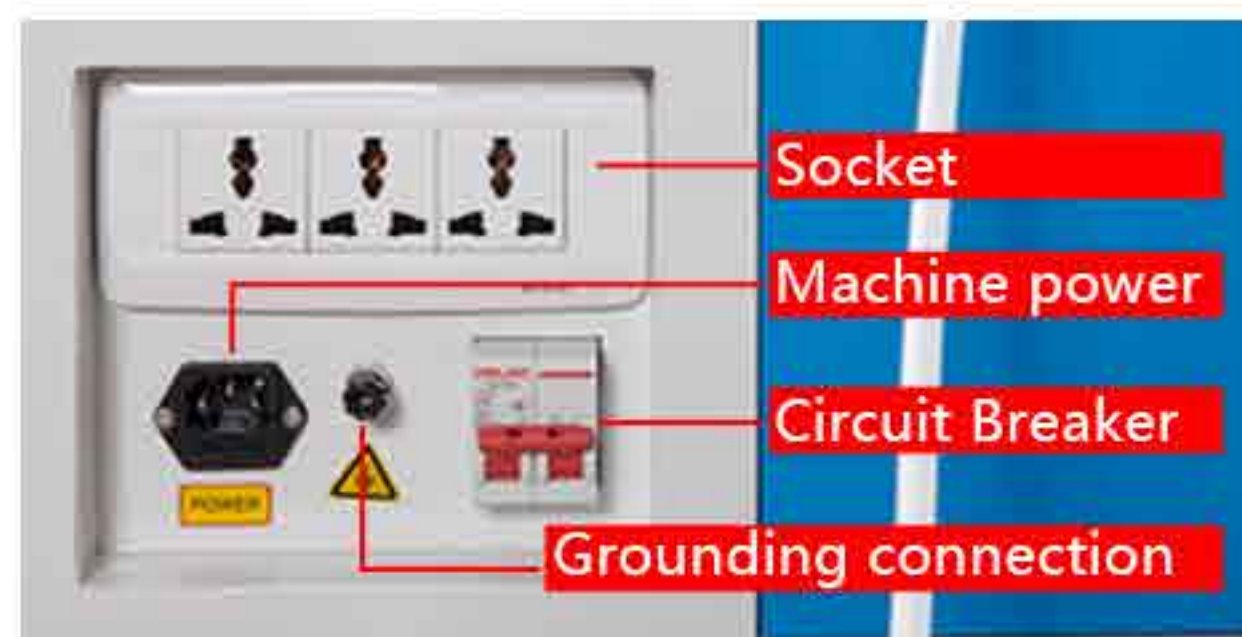
// Limit switch

Prevent hitting of moving system



// Leading chain

Towline routing and wear-resistant high-strength cables, beautiful and extend the life of the machine.



// Security protection

Ensure the safe operation of the machine and the safe use of electricity.

// Double stop switch

Ensure the safe operation of the machine and the safe use of electricity.



// LED Light

Easy to use, humanized operation

Our certificate

Foster Laser Technology Co., Ltd.



ACCESSORIES

FOSTER



Air Pump



Chimney



Water pump



Tool protection



Data Line



CD or U disk



Focal length ruler



Power Cord



Tool box



Exhaust fan
(Optional)



Cardan wheel



Instruction Manual

Optional accessories



Simple rotary axis



Standard rotary axis



S&A Water chiller
CW-3000 / CW-5000

DELIVER GOODS

FOSTER



CUTTING PARAMETERS

FOSTER

Applicable material for reference

Material	Engrave	Cut	Material	Engrave	Cut
Natural wood	√	√	Paper	√	√
Acrylic	√	√	Mylar	√	√
Glass	√	×	Press board	√	√
Double color plate	√	√	Rubber	√	√
Bamboo	√	√	Plywood	√	√
MDF	√	√	Fiberglass	√	√
Cloth	√	√	Painted metal	√	√
Leather	√	√	Plastic	√	√
Marble	√	×	Ceramic	√	×
Matte boards	√	√	Coated Metal	√	×
Stone	√	×	Other materials	Inquire us, we will test for you	

Cutting thickness of different laser power for reference

Laser power (W)	Acrylic(mm)	Plywood(mm)	MDF(mm)
40W	3	2	1.5
60W	8	5	3
80W	12	8	6
100W	15	12	9
150W	25	20	15

* The above data is for reference only

OUR REVIEWS

FOSTER

Supplier Service: **Very satisfied** (5 stars)
On-time Shipment: **Very satisfied** (5 stars)



9060 laser engraving machine

★★★★★

Great service from Fosterfaser very quick to communicate and very well packaged. Easy to assemble and accuracy is great. I would 100% recommend this company.



Supplier Service: **Acceptable** (3 stars)
On-time Shipment: **Very satisfied** (5 stars)



1390 LASER CUTTING MACHINE FOR METAL AND N...

★★★★★

very limited info, hard to get tech support. Didn't know I needed an oxygen cylinder, but machine is awesome.

Supplier Service: **Very satisfied** (5 stars)
On-time Shipment: **Very satisfied** (5 stars)

17 May 2020



6090 100 watt CO2 laser engraving machine with ruid...

★★★★★

Product shipped super fast even during this COVID-19 times when other sellers took ages. Everything came as described, and packed very well. If you want a laser machine don't get it from anyone else.

👍 0

Supplier Service: **Very satisfied** (5 stars) 10 Jul 2020
On-time Shipment: **Very satisfied** (5 stars)



1390 CNC CO2 laser cutting machine with CCD camera...

★★★★★

Good quality built and good support from the seller. Nice machine all around. Just had to find a version of Corel Draw in English. Laser was well aligned despite shipping and didn't have to do alignment myself. So very satisfied all around. I prefer using some industrial water.

[Read more](#)

👍 0

Supplier Service: **Very satisfied** (5 stars) 12 Jun 2020
On-time Shipment: **Very satisfied** (5 stars)



50W fiber laser marking machine 50W Raycus with rot...

★★★★★

great service and trustworthy! will definitely buy again!!

👍 0

Supplier Service: **Very satisfied** (5 stars) 22 Jun 2020
On-time Shipment: **Very satisfied** (5 stars)



laser engraving machine for perfume bottle 50W 4060...

★★★★★

The machine came with no scratches and no any damage, also the supplier was so active and helped me even after purchasing.

👍 0

Supplier Service: **Very satisfied** (5 stars) 25 May 2020
On-time Shipment: **Very satisfied** (5 stars)



Factory direct 150W 180W 220W RD6442S recirculating stainl...

★★★★★

wow just wow very great product. very satisfied customer here. the seller is very responsive. thank you so much.

👍 0

Supplier Service: **Very satisfied** (5 stars)
On-time Shipment: **Very satisfied** (5 stars)

22 Jun 2020



laser engraving machine for perfume bottle 50W 4060...

★★★★★

the machine came with no scratches and no any damage, also the supplier was so active and helped me even after purchasing.

👍 0

 Trade Assurance

Protect Your Alibaba.com Orders

Trade Assurance protects online orders when payment is made through Alibaba.com.

 Product Quality

 On Time Shipment

